

## TEEBOXES



IP67

### IP67 TEEBOX 3-WAY CABLE CONNECTOR THK.200.C2E

TeeBox 4 mm to 9.5mm cable max  
IP67 rated Screw fixing 3 cable entries,  
for use with Teeblock THB.029.A1A  
(included).



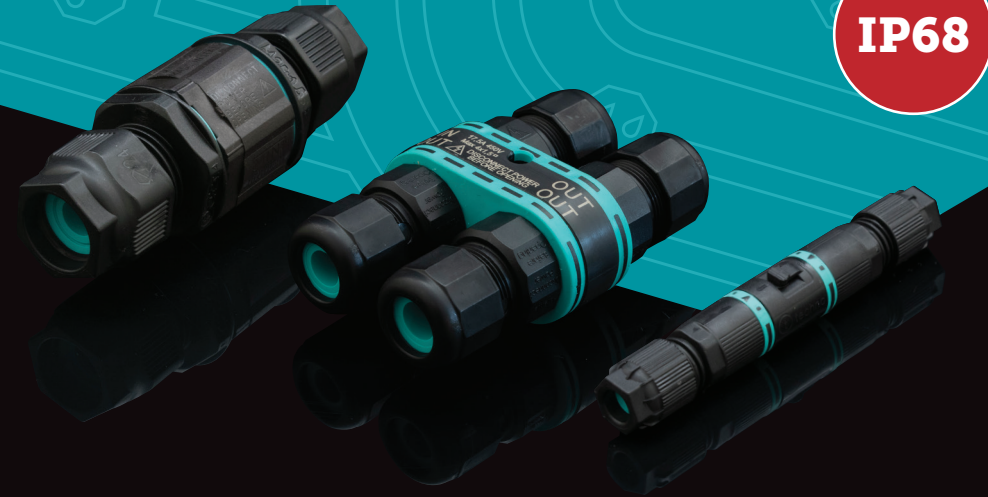
IP68

### MICRO TEEBOX THB.392.A4A

Micro series power distributor, 4 pole, 1  
input 3 output, sealed interconnections.

Also available in XDry anti-condensation  
version.

THB.392.R4A



## Discover our range of IP68 rated Weatherproof Connectors

### FEATURES

SUBMERSION & HIGH PRESSURE WATER RESISTANT

QUICK AND EASY TO INSTALL

RELIABLE UNDER EXTREME CONDITIONS

LARGE CABLE RANGE ACCEPTANCE

2-5 POLES AVAILABLE

TEMPERATURE RATING OF -40°C TO +125°C

MAKING THE RIGHT CONNECTIONS

[WWW.HYLEC-APL.COM](http://WWW.HYLEC-APL.COM) | [SALES@HYLEC-APL.COM](mailto:SALES@HYLEC-APL.COM) | 01933 234400



MAKING THE RIGHT CONNECTIONS



## TEETUBES



IP68

### TEETUBE IN-LINE 2-WAY CABLE CONNECTOR THK.20.BK

In-line 3 Pole Screw - end barrier contact  
5mm to 13mm, 4 mm max conductor  
size IP68 32A 450V 2 cable entries.



IP68

### TEETUBE 2-WAY CABLE CONNECTOR THK.390.A1A

TeeTube Mini 3 Pole Screw - end barrier  
contact 7mm to 13.5mm, 4 mm max  
conductor size IP68 32A 450V 2 cable entries.



IP68

### TEETUBE 3-WAY T-SPLITTER CABLE CONNECTOR THK.390.C1A

TeeTube Mini 3 Pole Screw - end barrier  
contact 7mm to 13.5mm, 4 mm max  
conductor size IP68 32A 450V 3 cable entries.

## TEEPLUGS & SOCKETS

Plugs & sockets are keyway coded to ensure correct assembly



IP68

### TEEPLUG & SOCKET THK.384.03

TeePlug 3 pole Screw terminal 7mm  
to 12mm cable diameter, 4 mm max  
conductor size IP66-68 17A 400V 1 cable  
entry, plus.

TeePlug Powersocket 3 pole Screw  
terminal 7mm to 12mm cable diameter,  
4 mm max conductor size IP66-68 17.5A  
400V 1 cable entry.



IP68

IP69K

### MICRO TEEPLUG & SOCKET THK.381.02

Micro Plug and Socket 2 pole Screw  
terminal 5.8mm to 6.9mm cable  
diameter, IP68 10A 400V 2 cable entry  
Miniaturisation - a diameter of only  
14mm (2 poles).

Also tested and approved to high  
pressure water (IP69K).

MAKING THE RIGHT CONNECTIONS

