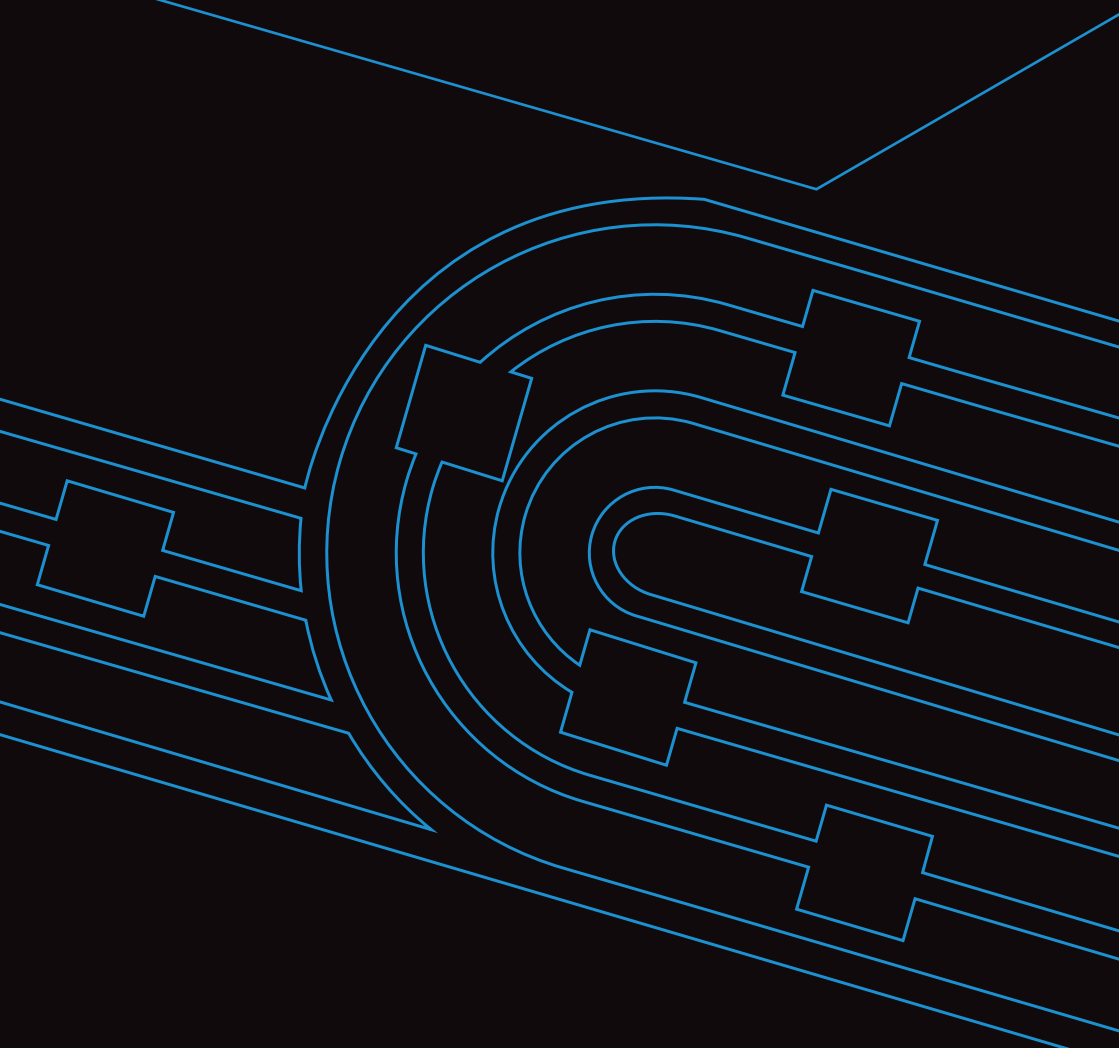


Junction box & door enclosures

For durable, high quality, choose Hylec



A Brand of Hylec-APL Ltd.

ABS Door Enclosures

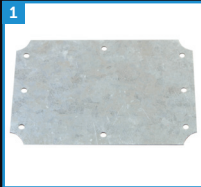
IP65 • IK08



Ideal for use in sea salt air conditions and dry dust environments, ABS Door Enclosures come complete with everything you need in one kit.

Kit includes:

- Galvanised Steel Back Plate¹
- Wall Mounting Brackets with Fixing Screws
- 1 x key Included as Standard²



FEATURES:

FLAME RETARDANT TO UL94-HB

SUPPLIED IN GREY (RAL 7035) BODY

**SOLID GREY (RAL 7035) OR
TRANSPARENT DOOR OPTIONS**

**TEMPERATURE RANGE OF
-20°C TO +85°C**

AVAILABLE IN 10 SIZES

Galvanised Steel Door Enclosures

IP66 • IK10



Every Hylec galvanised steel door enclosure comes complete with everything you need in one kit. Each door enclosure is supplied with a 2mm thick galvanised steel back plate and a **3 year guarantee** against corrosion.

Kit includes:

- External Mounting Feet & Spacers for the back plate
- Galvanised Back Plate
- Metal Lock & key²



FEATURES:

PRE-WIRED & FITTED EARTH STRAP¹

METAL LOCK & KEY²

IP66 GLAND PLATE AND GASKET

**COMPLIANCE TO IEC 60529 &
CE CERTIFIED**

**3 YEAR GUARANTEE AGAINST
CORROSION**

STAINLESS STEEL THREADED STUDS

AVAILABLE IN 21 SIZES

Stainless Steel Door Enclosures

IP66 • IK10



Made from grade 304 Stainless Steel, each enclosure comes complete with everything you need in one kit.

Kit includes:

- Metal Lock & Key
- Galvanised Back Plate²
- External Mounting Feet & Spacers for the Back Plate



FEATURES:

PRE-WIRED & FITTED EARTH STRAP¹

**STAINLESS STEEL HOUSING
(GRADE 304)**

METAL LOCK & KEY

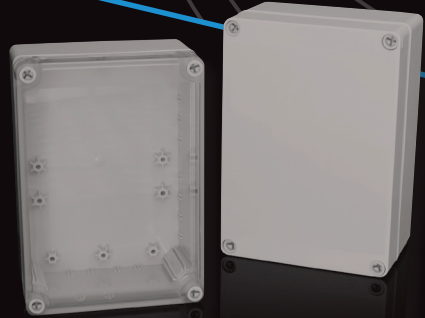
**2mm GALVANISED STEEL
BACK PLATE**

AVAILABLE IN 6 SIZES

MAKING THE RIGHT CONNECTIONS

Junction Box Enclosures

IP66 • IK08



Robust, tough and durable. Hylec Junction Box Enclosures are manufactured to a very high quality.

The Hylec Junction Box is ideal for use as a cable junction box or to enclose PCBs, control & emech components. Available in 7 sizes.

Kit includes:

- Pre-Cut Length of 35mm DIN Rail Section¹ – incl. Mounting Screws
- Galvanised Steel Component Mounting Plate (optional)



FEATURES:

FLAME RETARDANT ABS TO UL94-HB

MULTIPLE SLOTS FOR VERTICAL PCB MOUNTING

CAPTIVE SCREWS IN LID

COVER AVAILABLE IN GREY (RAL 7035) OR TRANSPARENT²

SUPPLIED WITH A 35mm DIN RAIL SECTION & MOUNTING SCREWS

AVAILABLE IN 6 SIZES



Junction Box & Door Enclosures

Accessories available for Galvanised Steel & Stainless Steel Door Enclosures:

- Cable Glands
- Kwik-Fix Cable Glands
- Venting Elements
- Contactors / Thermal Overloads
- Filter Fans
- Fans

Accessories available for Junction Box Enclosures:

- Cable Glands
- Kwik-Fix Cable Glands
- Venting Elements
- Contactors / Thermal Overloads
- Relay & Sockets
- Steel Mounting Plates