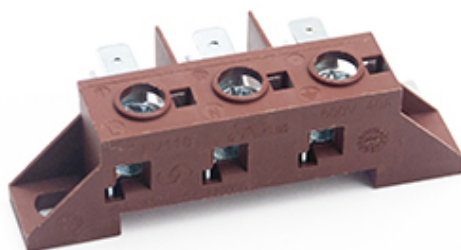




Screw to Tab Terminal Blocks

Range: Emech Terminals/Accessories

Order Code: FV110/B



DESCRIPTION

3 Pole screw to tab terminal block with integrated earth bracket

Subject to technical modification without notice.

Typographical and other errors do not justify claim for damages.

SPECIFICATION

Number of Poles	3
Tabs Per Pole	3
Tab Size (mm)	6.3x0.8
Terminal Material	Zinc-plated steel
Body Material	Polyamide, glass fibre reinforced
UL94 Rating	UL94V0
Max Conductor Size (Sq mm)	6
Min Conductor Size AWG	22
Max Conductor Size AWG	8
Max Current (A)	40
Max Voltage (V)	450
Min Temperature Rating °C	-5
Max Temperature Rating °C	150
Pitch (mm)	17.7
Height (mm)	24
Width (mm)	31.5
Length (mm)	81.3
Accessories Available	PA269
Comments	Photo is just a representative of terminal block, see line drawing for pole size and pitch

INDUSTRY ACCREDITATIONS

