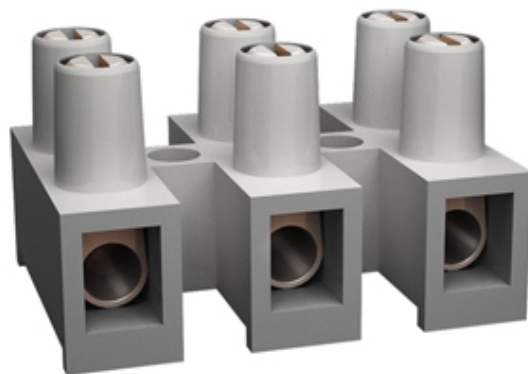




Pillar Terminal Blocks

Range: Emech Terminals/Accessories

Order Code: TLB-300W-12P-TS



DESCRIPTION

12 Pole pa66 pillar terminal block 41a 750v

Subject to technical modification without notice.

Typographical and other errors do not justify claim for damages.

SPECIFICATION

Number of Poles	12
Body Material	PA66
Colour	Natural
UL94 Rating	UL94V0
Base Type	Standard
Max Conductor Size (Sq mm)	6
Min Conductor Size AWG	22
Max Conductor Size AWG	10
Max Current (A)	41
Max Voltage (V)	750
Min Temperature Rating °C	-30
Max Temperature Rating °C	105
Pitch (mm)	12
Height (mm)	18.5
Width (mm)	23.5
Length (mm)	139.5

INDUSTRY ACCREDITATIONS

