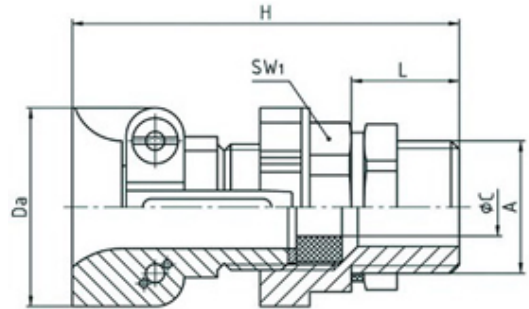


**7320 B**

Trumpet-shaped cable gland EX M20X1,5 thread length 15 min/max cable dia 8-13


**SPECIFICATION**

<b>Product Type</b>	EX
<b>Sealing Ring Material</b>	Nitrile rubber NBR, multiple perforation
<b>Body Material</b>	Polyamide
<b>Min Temperature °C</b>	-40
<b>Max Temperature °C</b>	85
<b>IP Rating</b>	66
<b>Thread Size</b>	M20
<b>Clamping Range Min (mm)</b>	8
<b>Clamping Range Max (mm)</b>	13
<b>External Connecting Thread Type</b>	Metric
<b>Thread Length (mm)</b>	15
<b>Strain Relief Clamp Material</b>	Polyamide PA
<b>Bolt/Nut Material</b>	Stainless steel
<b>Thread Sealing Ring</b>	KLINGERsil
<b>External Diameter (mm)</b>	40
<b>Comments</b>	PTB 00 ATEX 31212G, 2D and 3G/1, 2, 21, 22 Equipment Group IIEx e, increased safety EN 60079-0/EN 60079-7
<b>Width Across Flat 1 (mm)</b>	27
<b>Height (mm)</b>	77
<b>Connecting Thread Size</b>	M20x1.5
<b>Additional Material Detail</b>	Body - Polyamide PA6
<b>Category/Zone</b>	2G, 2D and 3G/1, 2, 21, 22
<b>Equipment Group</b>	Equipment Group II
<b>Standards</b>	EN60079-1/EN60079-7/EN61241-0/EN61241-1
<b>Type of Protection</b>	Ex e, increased safety