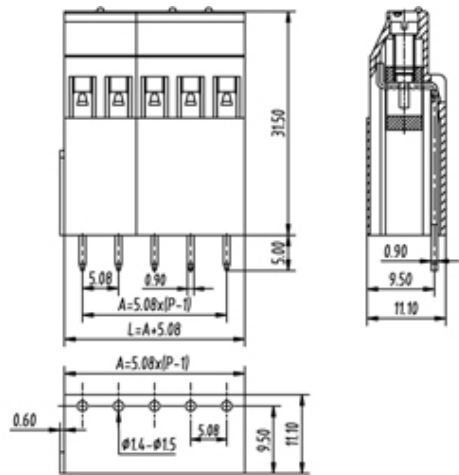




Rising Clamp - Single Row

Range: PCB Terminal Blocks, Connectors and Fuse Holders

Part Number: TL324VM-18PKS



DESCRIPTION

18 Pole Screw Rising Clamp Vertical 5.08mm pitch 25A 300V

Subject to technical modification without notice.

Typographical and other errors do not justify claim for damages.

SPECIFICATION

| | |
|-------------------------------|--------------|
| Type | Screw |
| Connection Method | Rising Clamp |
| Mounting Type | Vertical |
| Orientation | Vertical |
| Join | Interlocking |
| Pitch (mm) | 5.08 |
| Number of Poles | 18 |
| Max Current (A) | 25 |
| Max Voltage (V) | 300 |
| Height (mm) | 31.5 |
| Standard Colour | Black |
| Width (mm) | 11.1 |
| Length (mm) | 91.44 |
| Solder Pin Length (mm) | 5 |
| PCB Hole Diameter (mm) | 1.4-1.5 |
| Body Material | PA66 V0 |