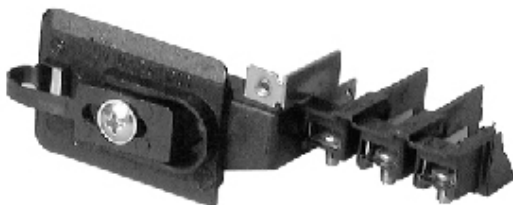


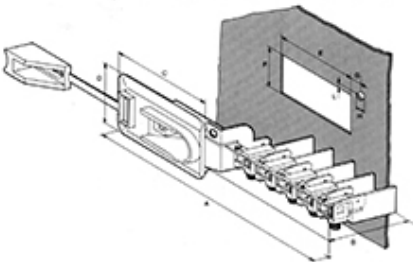
# Emech Terminals/Accessories

## Range: Clearance

Part Number: PA142/3



Dimensions / Versions mm (inches)	IEC Standards					American Standards			
	A	B	C	D	E	F	G	H	L
2	112.5 (4.43)								
		48.3 (1.90)	54.5 (2.15)	37.5 (1.48)	47.7 (1.88)	26.5 (1.12)	8.3 (0.33)	5 (0.20)	24 (0.95)
6	144 (5.67)								



### DESCRIPTION

CLEARANCE - Terminal block with integrated cable clamp and earth bracket. For snap-in fixing on chassis.

*Subject to technical modification without notice.  
Typographical and other errors do not justify claim for damages.*

## SPECIFICATION

Min Conductor Size (Sq mm)	2.5
Min Conductor Size AWG	18
Max Conductor Size AWG	14
Max Current (A)	25
Max Voltage (V)	450
Body Material	Polyamide PA6.6 black colour, UL94 V2
Colour	Black
Number of Poles	3
Operating Temperature °C	- 5 - 125°C (short time 155°C)
Terminal Material	Zinc plated steel
UL94 Rating	UL94 V2

## INDUSTRY ACCREDITATIONS

