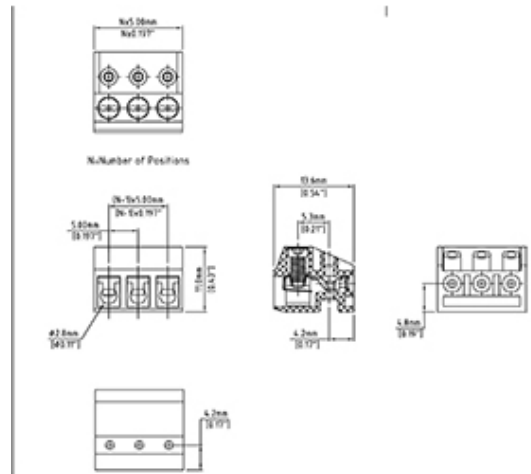


# PCB Terminal Blocks and Connectors

Range: Clearance

Order Code: EB582/15DS



## DESCRIPTION

CLEARANCE - 15 pole solid pluggable block

*Subject to technical modification without notice.*

*Typographical and other errors do not justify claim for damages.*

## SPECIFICATION

<b>Min Conductor Size AWG</b>	14
<b>Max Conductor Size AWG</b>	22
<b>Max Current (A)</b>	15
<b>Max Voltage (V)</b>	300 VAC
<b>Body Material</b>	Polyamide, UL 94V-0
<b>Colour</b>	Black
<b>Contacts Material</b>	Brass, Ni Plated
<b>Number of Poles</b>	15
<b>Pitch (mm)</b>	5
<b>Terminal Screw Material</b>	Steel, Zinc Plated