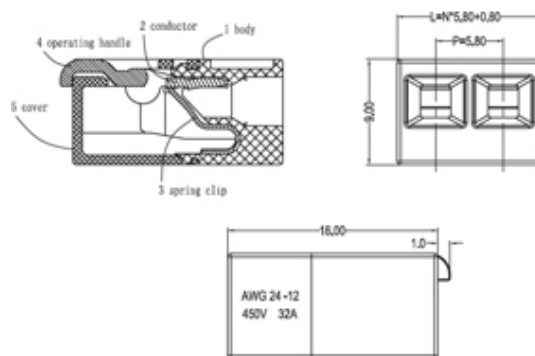


# Kwik Lever Connectors

## Range: Emech Terminals/Accessories

Part Number: HYKL-05



### DESCRIPTION

1 Pole 5 Way Kwik Lever connector with lever-spring clamp action for junction boxes

### EMECH TERMINALS/ACCESSORIES FEATURES

- Lever-spring clamp action for junction boxes
- Can be used for stranded cable as well as solid due to the lever-spring clamp action
- Transparent housing supports easy visual inspection
- Convenient, Time saving, Efficient, Safe and reliable
- Test Ports to confirm connections

*Subject to technical modification without notice.*

*Typographical and other errors do not justify claim for damages.*

## SPECIFICATION

|                            |  |
|----------------------------|--|
| Number of Poles            | 1 Pole 5 Way   |
| Colour                     | Transparent with Orange Levers   |
| Max Conductor Size (Sq mm) | 4  |
| Min Conductor Size AWG     | 24   |
| Max Conductor Size AWG     | 12   |
| Max Current (A)            | 32   |
| Max Voltage (V)            | 450  |
| Pitch (mm)                 | 5.8  |
| Height (mm)                | 9  |
| Width (mm)                 | 18   |
| Length (mm)                | 24   |
| Comments                   | Can be used for stranded cable as well as solid due to the lever-spring clamp action |

## INDUSTRY ACCREDITATIONS

