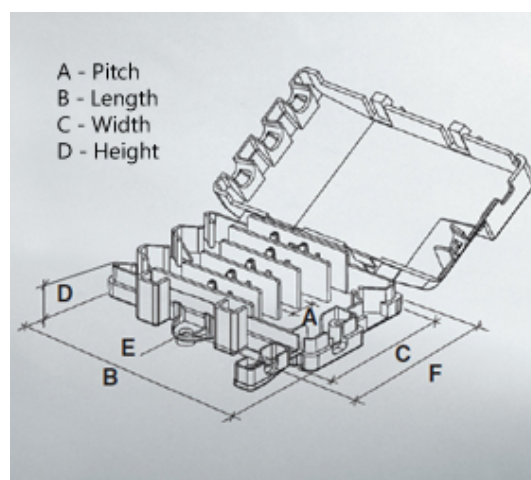
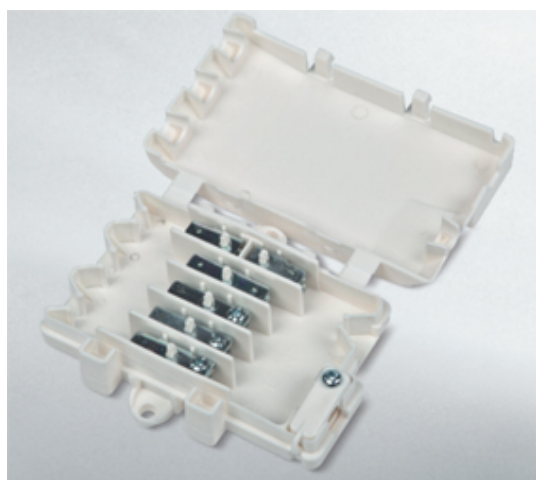




# Chassis/Panel Mount Tml/Boxes

## Range: Emech Terminals/Accessories

Order Code: CCB-PZA-S12-B06 (HY650 NY)



### DESCRIPTION

6 pole polypropylene terminal box with integrated cable clamp and internal screw-to-tap and/or tab-to-tab terminals, 12mm pitch, 17.5A, 450v

*Subject to technical modification without notice.*

*Typographical and other errors do not justify claim for damages.*

## SPECIFICATION

<b>Number of Poles</b>	6
<b>Tab Size (mm)</b>	6.3x0.8
<b>Terminal Material</b>	Zinc plated high resistance steel
<b>Body Material</b>	Polypropylene
<b>UL94 Rating</b>	UL94V0
<b>Max Conductor Size (Sq mm)</b>	1.5
<b>Max Current (A)</b>	17.5
<b>Max Voltage (V)</b>	450
<b>Pitch (mm)</b>	12
<b>Height (mm)</b>	21.5
<b>Width (mm)</b>	66
<b>Length (mm)</b>	115
<b>Diameter (mm)</b>	5.5
<b>Flammability Rating</b>	UL94V0 and GWIT775Å°C

## INDUSTRY ACCREDITATIONS

