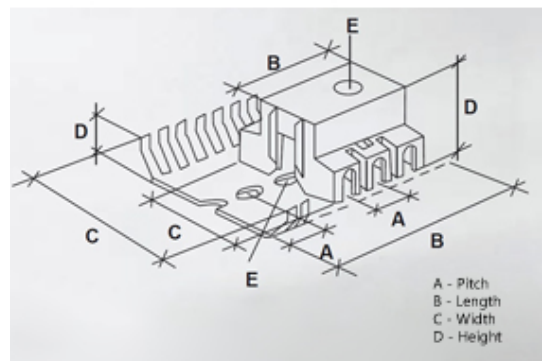
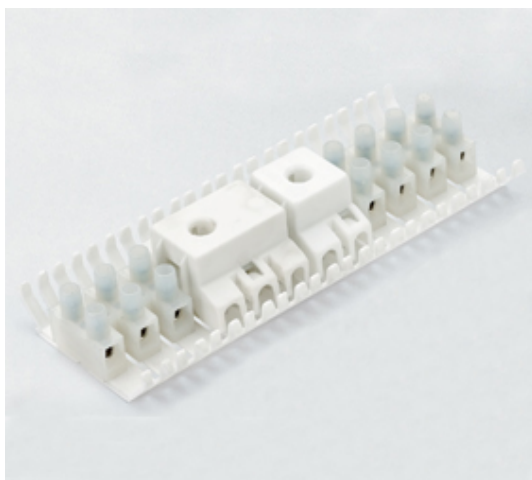


# Accessories

## Range: Emech Terminals/Accessories

Order Code: HY4511202



### DESCRIPTION

Cover for HY432 and HY433

*Subject to technical modification without notice.*

*Typographical and other errors do not justify claim for damages.*

## SPECIFICATION

<b>Number of Poles</b>	2
<b>Body Material</b>	PLP V2
<b>Height (mm)</b>	19
<b>Width (mm)</b>	31.8
<b>Length (mm)</b>	22