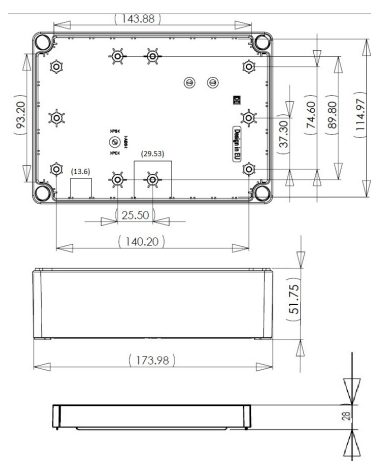
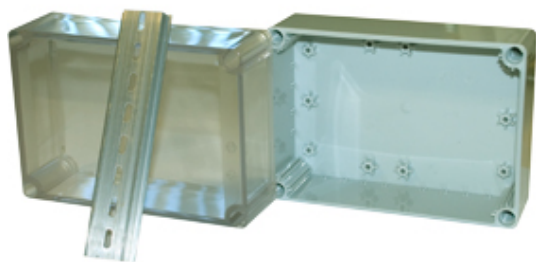


General Purpose Enclosures/Junction Boxes

Range: Enclosures

Order Code: ELE-ABS-13-08-18-GT (DN14T)



DESCRIPTION

Grey RAL7035 IP66, IK08 general purpose ABS enclosure with internal mounting stand-offs. Supplied complete with 35mm DIN rail section for internal component mounting. The clear polycarbonate lids are secured by captive plastic screws once inserted into the lid.

ENCLOSURES FEATURES

- 6 sizes available
- Designed to meet protection and combustibility standards IP66 and IK08
- Captive plastic screws in lid
- 35mm DIN rail section supplied for internal mounting of components
- Can also be used for enclosing printed circuit boards
- Std products supplied in ABS for base and lid but clear polycarbonate lid options are available on DN12E, DN15E, DN16E and DN17E.

Subject to technical modification without notice.

Typographical and other errors do not justify claim for damages.

SPECIFICATION

Product Type	General Purpose Enclosure/Junction Box
Base Style	General Purpose Enclosure/Junction Box
Base Colour	Grey
Lid Colour	Transparent
Enclosure Material	ABS + Polycarbonate lid
IP Rating	66
Colour	Grey/Transparent
Min Temperature Rating °C	-10
Max Temperature Rating °C	80
Height (mm)	125
Width (mm)	175
Depth (mm)	75