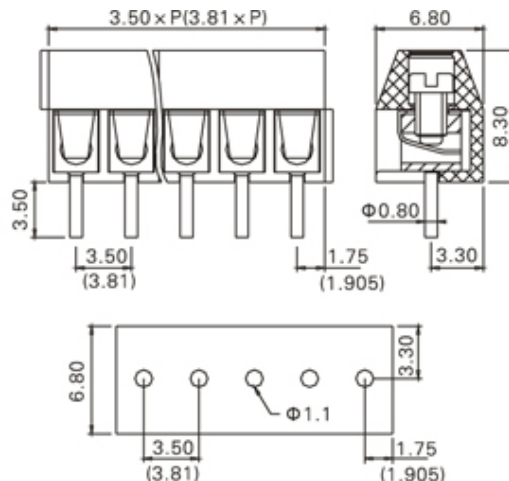
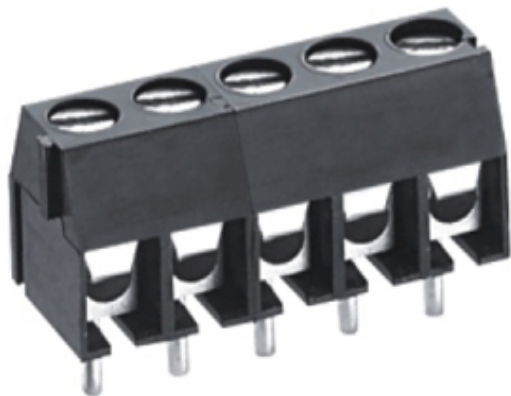


**TL001V-02PKC**

02 Pole Vertical PCB terminal block 3.5mm pitch 6A 300V


**SPECIFICATION**

Type	Screw
Connection Method	Wire Protector
Mounting Type	Wave - through hole
Orientation	Vertical
Join	Interlocking
Pitch (mm)	3.5
Number of Poles	2
Min Wire Size (Sq mm)	0.25
Max Wire Size (Sq mm)	1.5
Max Current (A)	6
Max Voltage (V)	300
Height (mm)	8.3
Standard Colour	Black
Width (mm)	6.8
Length (mm)	7
Solder Pin Length (mm)	3.5
PCB Hole Diameter (mm)	1.1
Body Material	PA66 V0
Comments	Pole sizes / no of ways not shown, please contact us for availability
Min Temperature Rating °C	16
Max Temperature Rating °C	105
Min Wire Size AWG	24
Max Wire Size AWG	-40
Terminal Type	Wire protected