

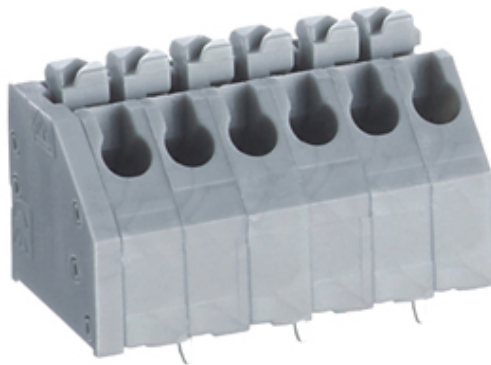


# Screwless - Push Wire

Range: PCB Terminal Blocks, Connectors and Fuse Holders

Order Code: TLM002C-11P

---



---

## DESCRIPTION

11 Pole Spring - Screwless Pushbutton Wave - through hole Long pin close to side cover 3.5mm pitch 2A 250V

*Subject to technical modification without notice.*

*Typographical and other errors do not justify claim for damages.*

## SPECIFICATION

<b>Type</b>	Spring - Screwless
<b>Connection Method</b>	Pushbutton
<b>Mounting Type</b>	Wave - through hole
<b>Orientation</b>	Long pin close to side cover
<b>Join</b>	End stackable
<b>Pitch (mm)</b>	3.5
<b>Number of Poles</b>	11
<b>Min Wire Size (Sq mm)</b>	0.33
<b>Max Wire Size (Sq mm)</b>	1.75
<b>Max Current (A)</b>	2
<b>Max Voltage (V)</b>	250
<b>Height (mm)</b>	13
<b>Standard Colour</b>	Grey
<b>Width (mm)</b>	12
<b>Length (mm)</b>	40
<b>Solder Pin Length (mm)</b>	3.3
<b>PCB Hole Diameter (mm)</b>	1.2
<b>Body Material</b>	PA66 V0
<b>Comments</b>	Pole sizes / no of ways not shown, please contact us for availability
<b>Min Temperature Rating °C</b>	-40
<b>Max Temperature Rating °C</b>	105
<b>Min Wire Size AWG</b>	22
<b>Max Wire Size AWG</b>	14

## INDUSTRY ACCREDITATIONS

