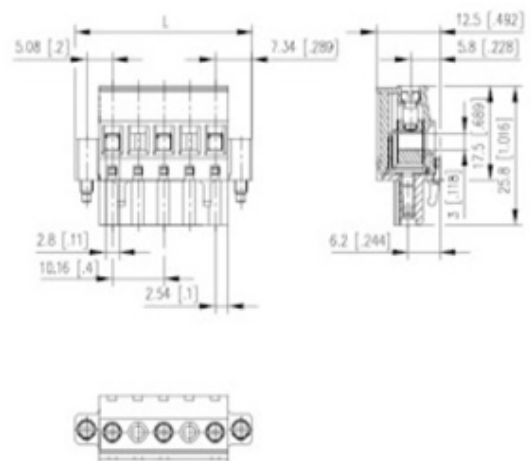




Plug and Socket PCB Terminal Blocks

Range: PCB Terminal Blocks, Connectors and Fuse Holders

Part Number: 31218202



DESCRIPTION

2 Pole horizontal screw female plug terminal block 10.16mm pitch 13.5A 630V

Subject to technical modification without notice.

Typographical and other errors do not justify claim for damages.

SPECIFICATION

Type	Cable mount - Female plug
Connection Method	Screw
Mounting Type	Rising clamp
Orientation	Horizontal
Join	Solid body non stackable
Pitch (mm)	10.16
Open/Closed/Screw/Flange	Screw flange
Number of Poles	2
Min Wire Size (Sq mm)	1
Max Wire Size (Sq mm)	2.5
Max Current (A)	13.5
Max Voltage (V)	630
Height (mm)	25.8
Standard Colour	Black
Width (mm)	12.5
Length (mm)	24.84
Comments	Pole sizes / no of ways not shown, please contact us for availability
IP Rating	20
Min Temperature Rating °C	12
Min Wire Size AWG	28
Pin Style	Pluggable
Tracking Resistance CTI (v)	600

INDUSTRY ACCREDITATIONS

