

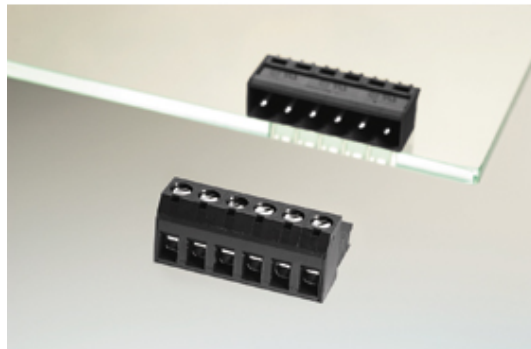


# Plug and Socket PCB Terminal Blocks

Range: PCB Terminal Blocks, Connectors and Fuse Holders

Part Number: 31049102

---



---

## DESCRIPTION

2 Pole vertical screw female plug terminal block 5mm pitch 13.5A 320V

*Subject to technical modification without notice.*

*Typographical and other errors do not justify claim for damages.*

## SPECIFICATION

<b>Type</b>	Cable mount - Female plug
<b>Connection Method</b>	Screw
<b>Mounting Type</b>	Wire protector
<b>Orientation</b>	Vertical
<b>Join</b>	Solid body non stackable
<b>Pitch (mm)</b>	5
<b>Number of Poles</b>	2
<b>Min Wire Size (Sq mm)</b>	0.08
<b>Max Wire Size (Sq mm)</b>	2.5
<b>Max Current (A)</b>	13.5
<b>Max Voltage (V)</b>	320
<b>Height (mm)</b>	12.7
<b>Standard Colour</b>	Black
<b>Width (mm)</b>	16.8
<b>Length (mm)</b>	10
<b>Comments</b>	Pole sizes / no of ways not shown, please contact us for availability
<b>IP Rating</b>	20
<b>Min Temperature Rating °C</b>	12
<b>Min Wire Size AWG</b>	22
<b>Pin Style</b>	Pluggable
<b>Terminal Type</b>	Wire protected
<b>Tracking Resistance CTI (v)</b>	600

## INDUSTRY ACCREDITATIONS

