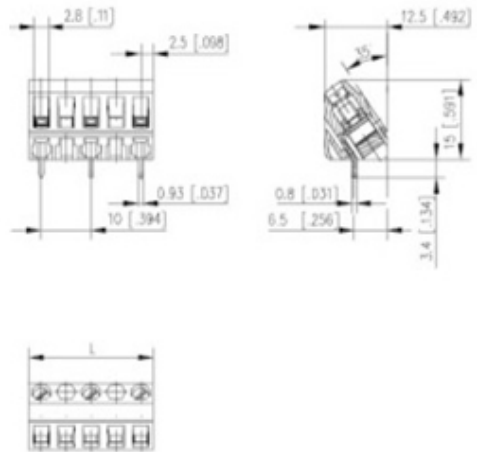




Standard PCB Terminal Blocks

Range: PCB Terminal Blocks, Connectors and Fuse Holders

Part Number: 31205203



DESCRIPTION

3 Pole 55 degree screw PCB terminal block 10mm pitch 16A 250V

*Subject to technical modification without notice.
Typographical and other errors do not justify claim for damages.*

SPECIFICATION

Type	Screw
Mounting Type	Wave - through hole
Orientation	55 Degree
Join	Solid body non stackable
Pitch (mm)	10
Number of Poles	3
Min Wire Size (Sq mm)	0.08
Max Wire Size (Sq mm)	2.5
Max Current (A)	16
Max Voltage (V)	250
Height (mm)	15
Standard Colour	Black
Width (mm)	12.5
Length (mm)	25
Solder Pin Length (mm)	3.4
PCB Hole Diameter (mm)	1.4
Comments	Pole sizes / no of ways not shown, please contact us for availability
IP Rating	20
Min Temperature Rating °C	12
Min Wire Size AWG	28
Pin Style	Solderable
Tracking Resistance CTI (v)	600

INDUSTRY ACCREDITATIONS

