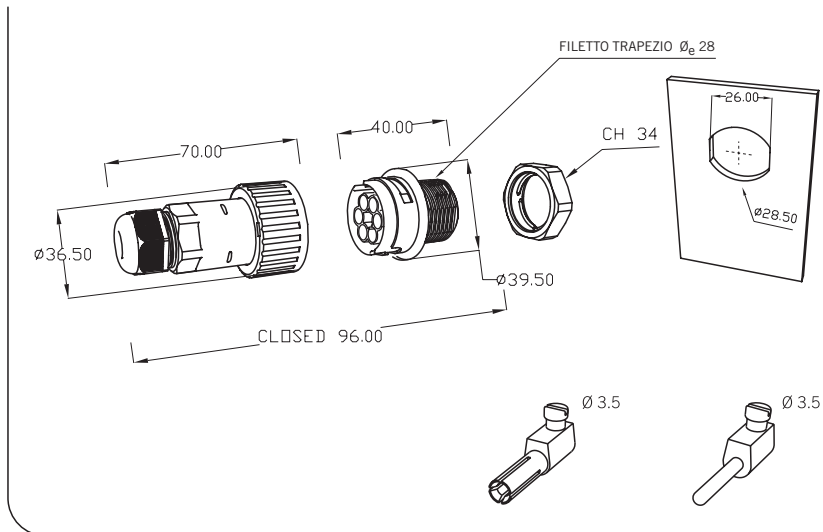




TH406

PATENTED IP68

6 poli



Connessione presa-spina 6 poli.
Facilità di cablaggio. Connessione a bussola o faston.
Kit di fornitura: frutti non inseriti.

6 poles connection socket-plug.
Easy wiring.
Supply kit: modules not inserted.

Dati tecnici - Technical data(*)

IP68	0,5 BAR 5 MT 1 ORA	
16A	1,5"	400V ~
Materia plastica - Plastic Material PA66 UL94 V2 GWT 850°C		
	Nero - Black	-20°C
	Grigio - Grey RAL 7035	
	Ottone nichelato Nickled brass	+125°C
	Ottone Argentato Silverplated brass	
	Acciaio zincato passivato Zinc passivated steel	M3
	Rated current	16A
	Rated impulse voltage	6KV
	Impulse withstand voltage	7,3KV
	Range of temperature	0-85°C
	Cable max	5G1,5" H07RN-F

**IN ATTESA DI OMOLOGAZIONE
HOMOLOGATION PENDING**

IP68

Per faston cilindrici universali Ø2
For universal cylindric faston Ø2



Codice - Part number

T H B . 4 0 6 . X X X



PLUG

THB.406.A1E
THB.405.A1E.AG
THB.406.A1F
THB.405.A1F.AG

Nero - Black
Grigio - Grey
RAL 7035



Diametro cavo - Cable diameter Ø **5÷14 mm**



POWER-SOCKET

THB.405.B2E
THB.405.B2E.AG
THB.405.B2F
THB.405.B2F.AG

Nero - Black
Grigio - Grey
RAL 7035



gommino doppio - double seal
frutti intercambiabili - interchangeable fruits

Codice - Part number

T H F . 4 0 6 . X X X



PLUG

THF.406.A1E
THF.406.A1F

Nero - Black
Grigio - Grey
RAL 7035



Diametro cavo - Cable diameter Ø **5÷14 mm**



POWER-SOCKET

THF.405.B2E
THF.405.B2F

Nero - Black
Grigio - Grey
RAL 7035



gommino doppio - double seal
frutti intercambiabili - interchangeable fruits

Eventuali modifiche e migliorie sui dati tecnici o sul prodotto potranno essere effettuate senza preavviso.
All technical data or other eventual product modifications and improvements can be carried out without notice
Techno S.r.l. - techno & innovation - tel. +39.031.976445 - www.techno.it - info@techno.it

Accessori - Accessories



604001400 Guarnizione rossa - *Red Seal*
 $\square \varnothing_e 28 - \varnothing_i 25 - SP.2$



604002500 Guarnizione nera - *Black Seal*
 $\square \varnothing_i 39 - \varnothing_e 27 - SP.1,5$

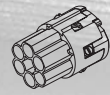
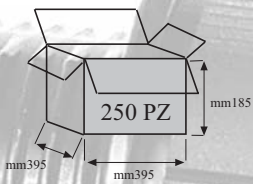


6000049CC Nero - *Black*
6000049CE Grigio - *Grey 7035* } Ghiera cieca per TH405-406
Blind ring for TH405-406

Kit di fornitura non assemblato THB....

Unassembled kit THB....

THX.405.AXX



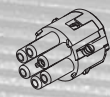
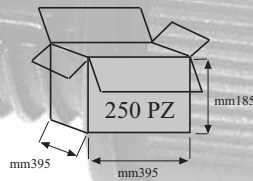
250 PZ
 THX.028.A5A...



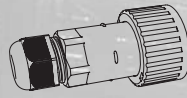
250 PZ



THX.405.AXX



250 PZ
 THX.028.B5A...

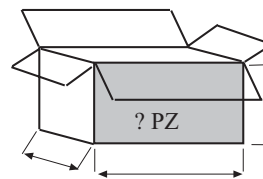
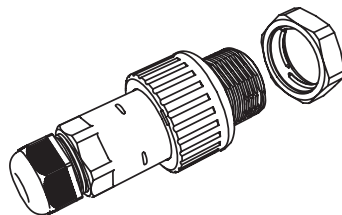
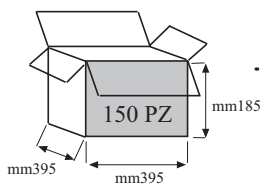


250 PZ

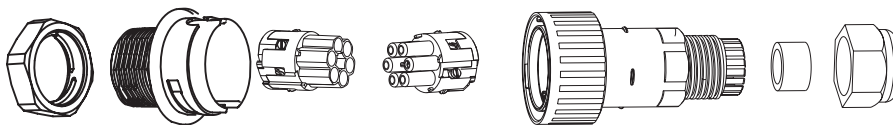
Min-Max \varnothing cavo - cable $\oplus \oplus \varnothing 5-14$ mm

Kit di fornitura assemblato THZ.... Assembled kit THZ....

Kit di fornitura con versionamenti e confezionamenti speciali THK... Special custom packed version THK....



Schema cablaggio - Wiring diagram



Istruzioni di assemblaggio disponibili sul sito www.techno.it
 Instruction sheet available on www.techno.it

ABOUT US

Hylec-APL is a well established Component Distributor specialising in the bulk supply of Terminal Blocks, Connectors and Cable Glands to major OEM's, Sub-Contractor Manufacturers and leading Distribution organisations into both the Electromechanical and the Electronics sectors.

Hylec APL can provide a wide range of product options and application solutions including access to many thousands of line items from its extensive and largely exclusive supplier base. Hylec APL maintains a large UK stock profile at its base in Northants, which is geared to reflect popular market demand whilst offering enhanced product availability to its many customers.

In addition to its core product lines of Terminal Blocks and Connectors – both Electromechanical and Electronic variants - Cable Glands and Cable entry components, Hylec APL has recently extended its range to include LED's, Switches, Buzzers, Relays, Fuses and DIN Rail Mounting Enclosures. This evolutionary development is designed to not only widen market appeal but also to provide the customer with greater choice, the potential for supplier consolidation and the commercial benefits of economies of scale.

Subject to availability, delivery methods include next day carrier as standard and customer specific options, such as special packaging requirements, can be readily considered.

Product choice is supported by a wealth of product knowledge and application experience, and our technical sales team will be only too pleased to assist in the process of correct product selection.

The vast majority of products hold recognised Industrial Safety Approvals and these together with samples can be supplied upon request.

Value for money consistent with the supply of the highest possible quality of products and service is our number one priority.



APL

Hylec Components Ltd - Andromeda Products Ltd

T: +44 (0)1933 234400 ■ F: +44 (0)1933 234411
E: sales@hylec-apl.com ■ W: www.hylec-apl.com



MAKING THE RIGHT CONNECTIONS