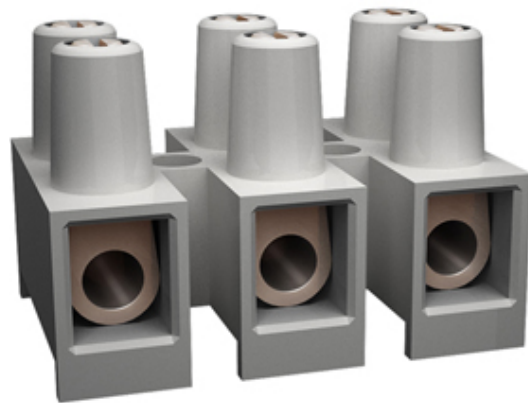




# Pillar Terminal Blocks

Range: Emech Terminals/Accessories

Order Code: TLB-400W-12P-TS



## DESCRIPTION

12 Pole pa66 pillar terminal block 57a 750v

*Subject to technical modification without notice.  
Typographical and other errors do not justify claim for damages.*

## SPECIFICATION

<b>Number of Poles</b>	12
<b>Body Material</b>	PA66
<b>Colour</b>	Natural
<b>UL94 Rating</b>	UL94V0
<b>Base Type</b>	Standard
<b>Max Conductor Size (Sq mm)</b>	10
<b>Min Conductor Size AWG</b>	20
<b>Max Conductor Size AWG</b>	8
<b>Max Current (A)</b>	57
<b>Max Voltage (V)</b>	750
<b>Min Temperature Rating °C</b>	-30
<b>Max Temperature Rating °C</b>	105
<b>Pitch (mm)</b>	13.5
<b>Height (mm)</b>	24.8
<b>Width (mm)</b>	25.4
<b>Length (mm)</b>	157.9

## INDUSTRY ACCREDITATIONS

