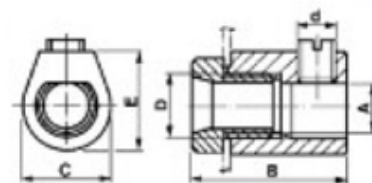


Cable Clamps

Range: Emech Terminals/Accessories

Order Code: 5126//IIII/26



Code	Dimensioni / Dimensions (mm)					
A	B	C	D	d	E	T
9.5	31	18.5	M13x1	M8x1.25	20	15

DESCRIPTION

Cable clamp

Subject to technical modification without notice.

Typographical and other errors do not justify claim for damages.

SPECIFICATION

Body Material	Nylon 66-RV
Min Conductor Size (Sq mm)	8
Max Conductor Size (Sq mm)	9.5
Height (mm)	20
Width (mm)	18.5
Length (mm)	31

INDUSTRY ACCREDITATIONS

