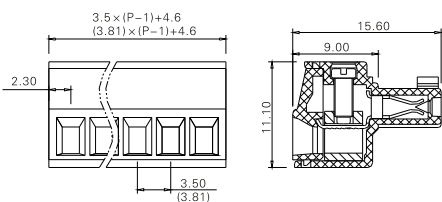


TLPS-001V(TLPS-100V)



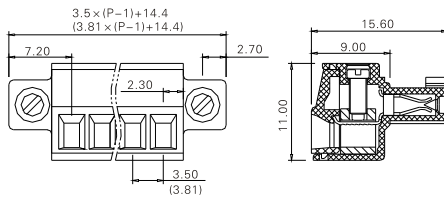
技术数据 Technical data

| | |
|---------------------|-----------------------------|
| Pitch (间距): | 3.50mm(3.81mm) |
| Approval (认证): | CE |
| Rated voltage (电压): | 300V 150V |
| Rated current (电流): | 8A 8A |
| Wire range (线径): | 24-14AWG 2.5mm ² |
| Screw (螺丝): | M2 |

料号 Part Number

| 极数(Poles) | 型号(Model) |
|-----------|------------------------------|
| 02 | TLPS-001V-02P(TLPS-100V-02P) |
| : | : |
| 24 | TLPS-001V-24P(TLPS-100V-24P) |

TLPSW-001V(TLPSW-100V)



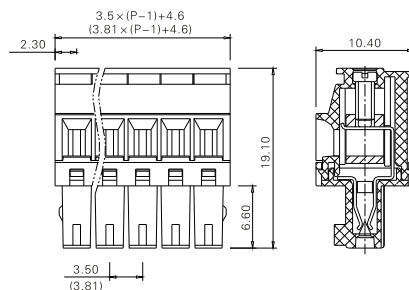
技术数据 Technical data

| | |
|---------------------|-----------------------------|
| Pitch (间距): | 3.50mm(3.81mm) |
| Approval (认证): | CE |
| Rated voltage (电压): | 300V 150V |
| Rated current (电流): | 8A 8A |
| Wire range (线径): | 24-14AWG 2.5mm ² |
| Screw (螺丝): | M2 |

料号 Part Number

| 极数(Poles) | 型号(Model) |
|-----------|--------------------------------|
| 02 | TLPSW-001V-02P(TLPSW-100V-02P) |
| : | : |
| 24 | TLPSW-001V-24P(TLPSW-100V-24P) |

TLPS-001R(TLPS-100R)



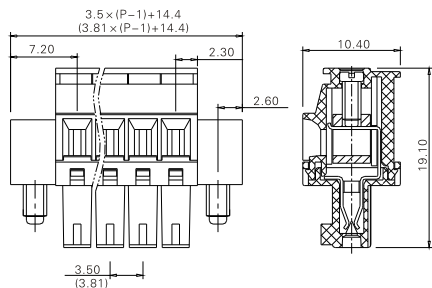
技术数据 Technical data

| | |
|---------------------|----------------|
| Pitch (间距): | 3.50mm(3.81mm) |
| Approval (认证): | Applying |
| Rated voltage (电压): | 300V |
| Rated current (电流): | 8A |
| Wire range (线径): | 24-14AWG |
| Screw (螺丝): | M2 |

料号 Part Number

| 极数(Poles) | 型号(Model) |
|-----------|------------------------------|
| 02 | TLPS-001R-02P(TLPS-100R-02P) |
| : | : |
| 24 | TLPS-001R-24P(TLPS-100R-24P) |

TLPSW-001R(TLPSW-100R)



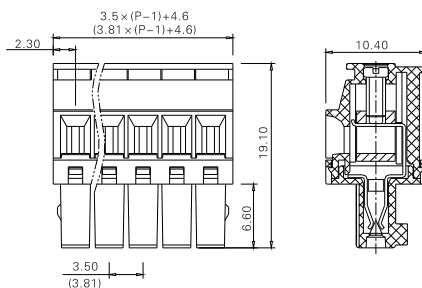
技术数据 Technical data

| | |
|---------------------|----------------|
| Pitch (间距): | 3.50mm(3.81mm) |
| Approval (认证): | Applying |
| Rated voltage (电压): | 300V |
| Rated current (电流): | 8A |
| Wire range (线径): | 24-14AWG |
| Screw (螺丝): | M2 |

料号 Part Number

| Poles(极数) | Model(型号) |
|-----------|--------------------------------|
| 02 | TLPSW-001R-02P(TLPSW-100R-02P) |
| : | : |
| 24 | TLPSW-001R-24P(TLPSW-100R-24P) |

TLPS-001RL(TLPS-100RL)



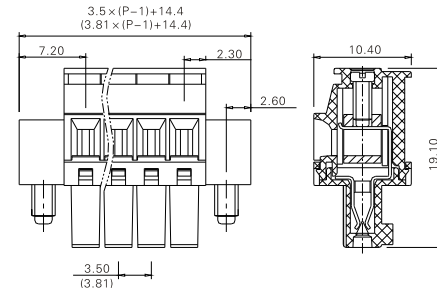
技术数据 Technical data

| | |
|---------------------|----------------|
| Pitch (间距): | 3.50mm(3.81mm) |
| Approval (认证): | Applying |
| Rated voltage (电压): | 300V |
| Rated current (电流): | 8A |
| Wire range (线径): | 24-14AWG |
| Screw (螺丝): | M2 |

料号 Part Number

| 极数(Poles) | 型号(Model) |
|-----------|--------------------------------|
| 02 | TLPS-001RL-02P(TLPS-100RL-02P) |
| : | : |
| 24 | TLPS-001RL-24P(TLPS-100RL-24P) |

TLPSW-001RL(TLPSW-100RL)



技术数据 Technical data

| | |
|---------------------|----------------|
| Pitch (间距): | 3.50mm(3.81mm) |
| Approval (认证): | Applying |
| Rated voltage (电压): | 300V |
| Rated current (电流): | 8A |
| Wire range (线径): | 24-14AWG |
| Screw (螺丝): | M2 |

料号 Part Number

| 极数(Poles) | 型号(Model) |
|-----------|----------------------------------|
| 02 | TLPSW-001RL-02P(TLPSW-100RL-02P) |
| : | : |
| 24 | TLPSW-001RL-24P(TLPSW-100RL-24P) |